



» NBOME DERIVATIVES

A new class of hallucinogens called 25-NBOMe or NBOMe, sold as research chemicals, has recently appeared in various online-shops.

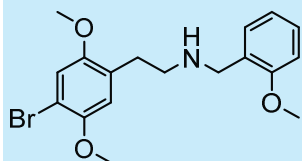
The NBOMe compounds are N-methoxybenzyl derivatives of the psychedelic 2C compounds (substituted 2,5-dimethoxyphenethylamines). They act as potent serotonin agonists, particularly at the 5-HT_{2A} receptors that are associated with hallucinogenic activity.

NBOMe compounds are described as highly powerful hallucinogens showing psychoactive effects similar to LSD. Hence they will probably be sold as “legal” alternatives to LSD.

Very little is known about the addictive potential and adverse side effects of these compounds but several fatal and non-fatal cases have been already reported.

The status of these new designer drugs is unregulated in many countries and there are numerous available analogues. This challenges both the legislators and the scientific community.

LIPOMED currently supplies a first range of NBOMe derivatives available as ready-to-use calibrated solutions and as standard pack sizes of 10 mg, 50mg and 100 mg. For more information, please check our website www.lipomed.com.

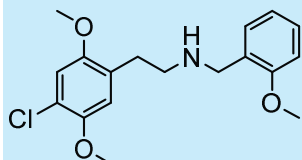


25B-NB2OMe.HCl

Synonym : 2C-B-NBOMe.HCl

$C_{18}H_{22}BrNO_3 \cdot HCl$ M.W.: 380.28+36.46

| | | |
|-----------------|------------------|---------------------------------|
| 25B-1542-HC-1LM | 1.0 mg base/1 ml | calibrated solution in methanol |
| 25B-1542-HC-10 | 10 mg | powder |
| 25B-1542-HC-50 | 50 mg | powder |
| 25B-1542-HC-100 | 100 mg | powder |

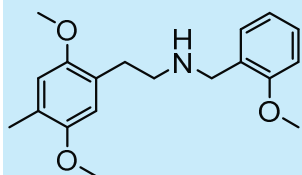


25C-NB2OMe.HCl

Synonym : 2C-C-NBOMe.HCl

$C_{18}H_{22}ClNO_3 \cdot HCl$ M.W.: 335.83+36.46

| | | |
|-----------------|------------------|---------------------------------|
| 25C-1564-HC-1LM | 1.0 mg base/1 ml | calibrated solution in methanol |
| 25C-1564-HC-10 | 10 mg | powder |
| 25C-1564-HC-50 | 50 mg | powder |
| 25C-1564-HC-100 | 100 mg | powder |

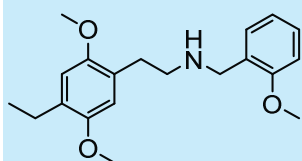


25D-NB2OMe.HCl

Synonym : 2C-D-NBOMe.HCl

$C_{19}H_{25}NO_3 \cdot HCl$ M.W.: 315.41+36.46

| | | |
|-----------------|------------------|---------------------------------|
| 25D-1563-HC-1LM | 1.0 mg base/1 ml | calibrated solution in methanol |
| 25D-1563-HC-10 | 10 mg | powder |
| 25D-1563-HC-50 | 50 mg | powder |
| 25D-1563-HC-100 | 100 mg | powder |

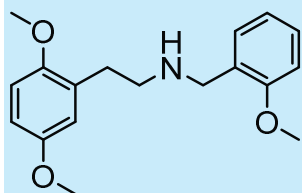


25E-NB2OMe.HCl

Synonym : 2C-E-NBOMe.HCl

$C_{20}H_{27}NO_3 \cdot HCl$ M.W.: 329.44+36.46

| | | |
|-----------------|------------------|---------------------------------|
| 25E-1557-HC-1LM | 1.0 mg base/1 ml | calibrated solution in methanol |
| 25E-1557-HC-10 | 10 mg | powder |
| 25E-1557-HC-50 | 50 mg | powder |
| 25E-1557-HC-100 | 100 mg | powder |

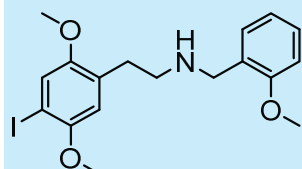


25H-NB2OMe.HCl

Synonym : 2C-H-NBOMe.HCl

$C_{18}H_{23}NO_3 \cdot HCl$ M.W.: 301.39+36.46

| | | |
|-----------------|------------------|---------------------------------|
| 25H-1554-HC-1LM | 1.0 mg base/1 ml | calibrated solution in methanol |
| 25H-1554-HC-10 | 10 mg | powder |
| 25H-1554-HC-50 | 50 mg | powder |
| 25H-1554-HC-100 | 100 mg | powder |

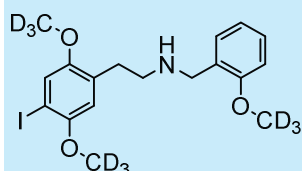


25I-NB2OMe.HCl

Synonym : 2C-I-NBOMe.HCl

$C_{18}H_{22}INO_3 \cdot HCl$ M.W.: 427.28+36.46

| | | |
|-----------------|------------------|---------------------------------|
| 25I-1555-HC-1LM | 1.0 mg base/1 ml | calibrated solution in methanol |
| 25I-1555-HC-10 | 10 mg | powder |
| 25I-1555-HC-50 | 50 mg | powder |
| 25I-1555-HC-100 | 100 mg | powder |

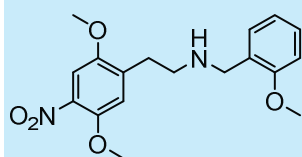


25I-NB2OMe-D₉.HCl

Synonym : 2C-I-NBOMe-D₉.HCl

$C_{18}H_{13}D_9INO_3 \cdot HCl$ M.W.: 436.33+36.46

| | | |
|-------------------|------------------|---------------------------------|
| 25I-1588-HC-0.1LM | 0.1 mg base/1 ml | calibrated solution in methanol |
| 25I-1588-HC-1LM | 1.0 mg base/1 ml | calibrated solution in methanol |
| 25I-1588-HC-10 | 10 mg | powder |
| 25I-1588-HC-50 | 50 mg | powder |
| 25I-1588-HC-100 | 100 mg | powder |

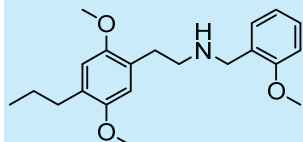


25N-NB2OMe.HCl

Synonym : 2C-N-NBOMe.HCl

$C_{18}H_{22}N_2O_5 \cdot HCl$ M.W.: 346.38+36.46

| | | |
|-----------------|------------------|---------------------------------|
| 25N-1562-HC-1LM | 1.0 mg base/1 ml | calibrated solution in methanol |
| 25N-1562-HC-10 | 10 mg | powder |
| 25N-1562-HC-50 | 50 mg | powder |
| 25N-1562-HC-100 | 100 mg | powder |

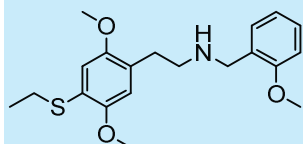


25P-NB2OMe.HCl

Synonym : 2C-P-NBOMe.HCl

$C_{21}H_{29}NO_3 \cdot HCl$ M.W.: 343.47+36.46

| | | |
|-----------------|------------------|---------------------------------|
| 25P-1560-HC-1LM | 1.0 mg base/1 ml | calibrated solution in methanol |
| 25P-1560-HC-10 | 10 mg | powder |
| 25P-1560-HC-50 | 50 mg | powder |
| 25P-1560-HC-100 | 100 mg | powder |

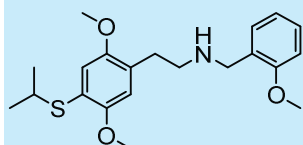


25T2-NB2OMe.HCl

Synonym : 2C-T-2-NBOMe.HCl

$C_{20}H_{27}NO_3 \cdot S \cdot HCl$ M.W.: 361.50+36.46

| | | |
|------------------|------------------|---------------------------------|
| 25T2-1565-HC-1LM | 1.0 mg base/1 ml | calibrated solution in methanol |
| 25T2-1565-HC-10 | 10 mg | powder |
| 25T2-1565-HC-50 | 50 mg | powder |
| 25T2-1565-HC-100 | 100 mg | powder |

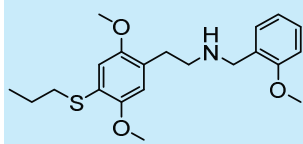


25T4-NB2OMe.HCl

Synonym : 2C-T-4-NBOMe.HCl

$C_{21}H_{29}NO_3 \cdot S \cdot HCl$ M.W.: 375.53+36.46

| | | |
|------------------|------------------|---------------------------------|
| 25T4-1566-HC-1LM | 1.0 mg base/1 ml | calibrated solution in methanol |
| 25T4-1566-HC-10 | 10 mg | powder |
| 25T4-1566-HC-50 | 50 mg | powder |
| 25T4-1566-HC-100 | 100 mg | powder |

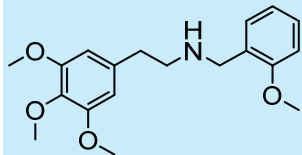


25T7-NB2OMe.HCl

Synonym : 2C-T-7-NBOMe.HCl

$C_{21}H_{29}NO_3 \cdot S \cdot HCl$ M.W.: 375.53+36.46

| | | |
|------------------|------------------|---------------------------------|
| 25T7-1567-HC-1LM | 1.0 mg base/1 ml | calibrated solution in methanol |
| 25T7-1567-HC-10 | 10 mg | powder |
| 25T7-1567-HC-50 | 50 mg | powder |
| 25T7-1567-HC-100 | 100 mg | powder |



Mescaline-NB2OMe.HCl

Synonym : Mescaline-NBOMe.HCl

$C_{19}H_{25}NO_4 \cdot HCl$ M.W.: 331.41 + 36.46

| | | |
|-----------------|------------------|--------------------------------|
| 345-1558-HC-1LE | 1.0 mg base/1 ml | calibrated solution in ethanol |
| 345-1558-HC-10 | 10 mg | powder |
| 345-1558-HC-50 | 50 mg | powder |
| 345-1558-HC-100 | 100 mg | powder |

Ordering & other information

LIPOMED is a private Swiss Health Care Company. We are one of the leading companies for Analytical Reference Standards worldwide and specialized in the research, development and manufacturing of ethical pharmaceuticals and products for the treatment of rare diseases.

Since 1993 LIPOMED is dedicated to providing products and services of outstanding quality and expertise. We have our own GMP/GDP and ISO 9001 certified pharmaceutical production facilities in Arlesheim, near Basel. We are also ISO/IEC 17025 accredited for testing of Analytical Reference Standards and ISO 17034 accredited for the production of Reference Material.

Our innovative products are marketed and distributed with offices and partners in more than 50 countries around the world.

LIPOMED's Analytical Reference Standards currently include the following classes of substances, their deuterated analogues and metabolites, such as Glucuronides and Sulfates:

- » Alcohol & Ethanol Biomarkers
- » Amphetamines & Sympathomimetic amines
- » Antidepressants
- » Antipsychotics
- » Barbiturates
- » Benzodiazepines
- » Cannabinoids
- » Cathinones
- » Cocaines
- » Custom Mixtures
- » Hallucinogens
- » Opioids
- » Other CNS Depressants
- » Steroids
- » Vitamins

For more information about LIPOMED's Analytical Reference Standards, please visit our website www.lipomed.com.

SWITZERLAND (HEADQUARTERS)

LIPOMED AG
Fabrikmattenweg 4
4144 Arlesheim
Switzerland
Tel +41 61 702 02 00
Fax +41 61 702 02 20
lipomed@lipomed.com

GERMANY

LIPOMED GmbH
Hegenheimer Str. 2
79576 Weil am Rhein
Germany
Tel +49 7621 1693 473
Fax +49 7621 1693 474
lipomed@lipomed.com

USA, CANADA, BERMUDA

LIPOMED Inc
150 Cambridge Park Drive
Cambridge, MA 02140
USA
Tel +1 617 577 7222
Fax +1 617 577 1776
ussales@lipomed.com



LIPOMED AG, Switzerland is **GMP/GDP** and **ISO 9001** certified for production and distribution of Pharmaceuticals and **ISO/IEC 17025** (ANAB certificate no. AT-1760) accredited for testing of Analytical Reference Standards and **ISO 17034** (ANAB certificate no. AR-1761) accredited for Reference Material production. All products distributed by LIPOMED affiliates are manufactured by LIPOMED AG and distributed under protocols of LIPOMED AG.

