



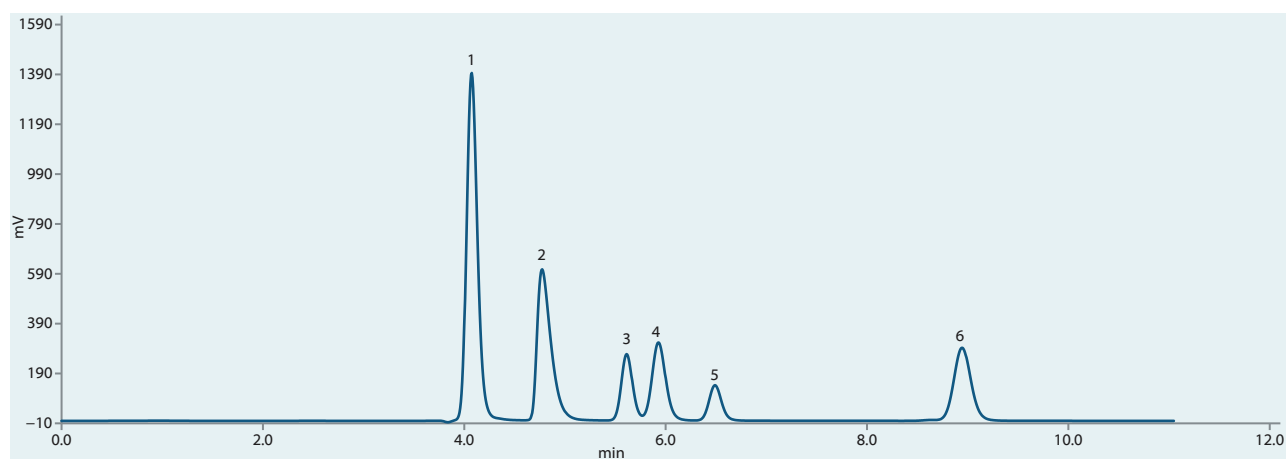
AMINES AND AROMATICS

INTRODUCTION

Amines is a group of compounds, which is not easy to separate. The Novel ASTRA® DM phase with a polar embedded group and polar selector enables the separation of different amines and organic compounds with an amino-functional group. Peaks show an excellent symmetry under shown conditions.

Substance: **Kynurenine**,
CAS Number 343-65-7 (D/L)
Tryptamine, CAS Number 61-54-1
Acetophenone, CAS Number 98-86-2

Melatonin, CAS Number 73-31-4
Toluene, CAS Number 108-88-3
Naphthalene, CAS Number 91-20-3



Standard on ASTRA® DM column

Column	ASTRA® DM, 5 µm
Dimensions	150 mm × 4.6 mm
Part number	AST-5810-LK46
Mobile phase	A: 100mM DEA + 100mM FA, pH 3.0 B: Methanol Isocratic 15:85 - A:B (v/v)
Flow rate	0.75 ml/min
Temperature	20 °C
Injection volume	1.0 µl
Detection	UV @250 nm
Analytes	1. Kynurenine 2. Tryptamine 3. Acetophenone 4. Melatonin 5. Toluene 6. Naphtalene

ASTRA® is a trademark registered by Chromservis s.r.o. Other trademarks and trade names may be used in this document to refer to either the entities claiming the marks and/or names or their products and are the property of their respective owners. We disclaim proprietary interest in the marks and names of others.